

Certificate of Analysis

Product Cat. No.: M00576

Host Cell: CHO-K1

Target gene: human flt3

Shipping Conditions: Dry ice

Lot Number: B30061711

For research use only

860 Centennial Ave., Piscataway, NJ 08854, USA

Toll-Free: 1-877-436-7274 Tel: 1-732-885-9188 Fax: 1-732-210-0262 Email: order@genscript.com Web: www.genscript.com

INDEX

INDEX	2
Certificate of Analysis.....	3
Stable Cell Line Information	3
Certificate of Analysis.....	4
QC Data	4
Instruction for maintaining stable cell line.....	5
Cell recovery	5
Cell Maintenance and Subculturing.....	5
Cell Cryopreservation.....	6
Packing List.....	7

For research use only

860 Centennial Ave., Piscataway, NJ 08854, USA

Toll-Free: 1-877-436-7274 Tel: 1-732-885-9188 Fax: 1-732-210-0262 Email: order@genscript.com Web: www.genscript.com

Certificate of Analysis

Stable Cell Line Information

Recommended Cell Culture Medium: F-12K (Gibco, Cat. #21127-022), FBS (Gibco, Cat. #10099-141), and 6µg/ml Puromycin* (Gibco, Cat. #10131-027)

Freeze Medium: 95% complete growth medium, 5% (V/V) DMSO

Description: One stable subline using CHO-K1 as the host will be established to overexpress human flt3.

QC: FACS

Mycoplasma 160 Test:** Negative

** Concentration used for selection was 6 µg/ml Puromycin.*

*** Our PCR mycoplasma test covers 160 of the most common species of mycoplasma, with sufficient sensitivity and specificity.*

Notice to Purchaser:

GenScript stable cell line products are to be used for research purposes only, not intended for use in humans. GenScript products may not be transferred to third parties or used to manufacture commercial products without written approval. Use of this product is also subject to compliance with the licensing requirements.

For research use only

860 Centennial Ave., Piscataway, NJ 08854, USA

Toll-Free: 1-877-436-7274 Tel: 1-732-885-9188 Fax: 1-732-210-0262 Email: order@genscript.com Web: www.genscript.com

Certificate of Analysis

QC Data

1. Validation by Flow Cytometry

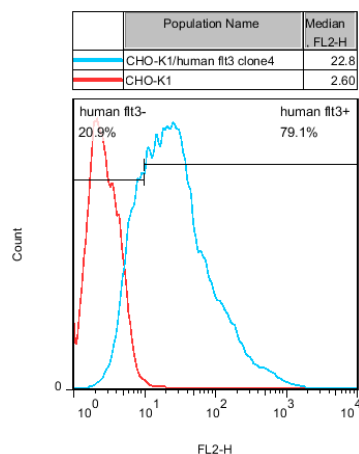


Figure 1. FACS analysis of human flt3 in CHO-K1/ flt3

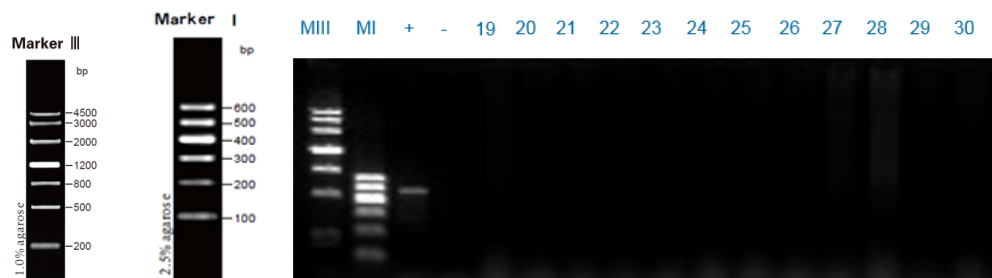


Figure 2. Myco 160 analysis of human flt3 in CHO-K1/ flt3 (Lane 30: M00576)

For research use only

860 Centennial Ave., Piscataway, NJ 08854, USA

Toll-Free: 1-877-436-7274 Tel: 1-732-885-9188 Fax: 1-732-210-0262 Email: order@genscript.com Web: www.genscript.com

Instruction for maintaining stable cell line

Cell recovery

The cells were maintained in F-12K, 10% FBS, and 6 µg/ml Puromycin. The S.O.P for cell recovery is briefly introduced here:

- 1) Prepare a 37°C water bath.
- 2) Take the cryovial out of the liquid nitrogen tank and thaw it by gentle swirling in the water bath until ice crystals are melted, usually within 1-3 minutes.
- 3) Decontaminate the vial by spraying with 70% ethanol.
- 4) Unscrew the vial and transfer the cells into a 15 ml sterile conical centrifuge tube containing 9 ml pre-warmed complete growth medium.
- 5) Centrifuge the tube at 125 g for 10 minutes, discard the supernatant and resuspend the cells in 2 ml complete growth medium. Pipette gently to loosen the pellet.
- 6) Transfer the cell suspension to the culture vessel with antibiotic free medium and mix well. Incubate the vessel at 37°C, 5% CO₂.
- 7) Replace the medium with fresh culture medium the next day (with appropriate concentration of antibiotic).

Cell Maintenance and Subculturing

Volumes listed below are for 10 cm dish, proportionally reduce or increase the volume for culture vessels of other sizes.

- 1) Balance the complete growth medium to 37°C in a water bath.
- 2) Discard the culture medium of the dish.
- 3) Briefly rinse the cell layer with Ca²⁺/Mg²⁺ free DPBS to remove all traces of serum.
- 4) Add 1.0 to 2.0 ml of Trypsin-EDTA solution to the dish and observe cells under an inverted microscope until cell layer is dispersed (usually within 1 to 3 minutes).

Note: To avoid clumping, do not agitate the cells by hitting or shaking the dish while waiting for the cells to detach. Cells that are difficult to detach may be placed at 37°C to facilitate the dispersal.

- 5) Add 8.0 ml of complete growth medium and suspend the cells by gently pipetting.
- 6) Centrifuge the cells at 125 g for 10 minutes, discard the supernatant and resuspend the cells in 5 ml complete growth medium.
- 7) Add appropriate aliquot of the cell suspension to new culture vessel.

For research use only

860 Centennial Ave., Piscataway, NJ 08854, USA

Toll-Free: 1-877-436-7274 Tel: 1-732-885-9188 Fax: 1-732-210-0262 Email: order@genscript.com Web: www.genscript.com

Subcultivation Ratio: 1:3 to 1:6

Medium Renewal: 2-3 times per week

Cell Cryopreservation

- 1) Prepare a freeze medium consisting of complete growth medium and 5% DMSO.
- 2) Harvest cells by gentle centrifugation at 125 g for 10 minutes and resuspend them in the freeze medium at a concentration of 1×10^6 to 5×10^6 viable cells/ml. Rest of the cells are cultured until the viability of the recovered cells is confirmed.
- 3) Label the cryovials with the name of the cell line, then add 1 ml of the cell suspension to each of the vials.
- 4) Place the vials into a pre-cooled (4°C) controlled-rate freeze chamber and place the chamber in a -80°C freezer for at least 24 hours.
- 5) Quickly transfer the vials to a liquid nitrogen tank.
- 6) After 24 hours' preservation in liquid nitrogen, take one vial out and culture the cells to check the cell viability.

For research use only

860 Centennial Ave., Piscataway, NJ 08854, USA

Toll-Free: 1-877-436-7274 Tel: 1-732-885-9188 Fax: 1-732-210-0262 Email: order@genscript.com Web: www.genscript.com

Packing List of M00576

Cell lines (Shipping Condition: -80°C Dry Ice, Store at -196°C)

Name: CHO-K1/Human Flt3

Quantity: 1x10⁶cells/vial

Lot No.: B30061711

Number of vial: 2 vials

Store at: -196°C

Certified by: *Jan van*

Date: 11/30/2017

For research use only

860 Centennial Ave., Piscataway, NJ 08854, USA

Toll-Free: 1-877-436-7274 Tel: 1-732-885-9188 Fax: 1-732-210-0262 Email: order@genscript.com Web: www.genscript.com

Appendix

1. Target gene information

Human Flt3, NM_004119.2;

2. Antibodies used for FACS

Primary antibody: PE anti-human CD135 (Flt-3/Flk-2) Antibody (Biolegend Cat#313306)

For research use only

860 Centennial Ave., Piscataway, NJ 08854, USA

Toll-Free: 1-877-436-7274 Tel: 1-732-885-9188 Fax: 1-732-210-0262 Email: order@genscript.com Web: www.genscript.com