
Certificate of Analysis

Product Information

Lot Number: B30021707

Host Cell: HEK293

Target gene: GLP1R

Quantity: 1 vials of frozen cells

Shipping Conditions: Dry ice

Recommended Storage: Liquid Nitrogen

Certificate of Analysis

Stable Cell Line Information

Recommended Cell Culture Medium: DMEM (Gibco, cat# 10566-016), 10% FBS (Gibco, cat#10099-141), and 400 µg/ml G418(Gibco, cat#10131-027), 100 µg/ml Hygromycin B (Invitrogen,cat#10687-010)

Freeze Medium: 90%FBS,10% (V/V) DMSO

Application: Functional assay for HEK293/CRE-luciferase/GLP1R

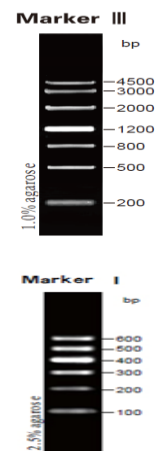
QC: Luciferase assay

Mycoplasma 11[§]: Negative

MIII MI + - 58 59 60 61 62 63



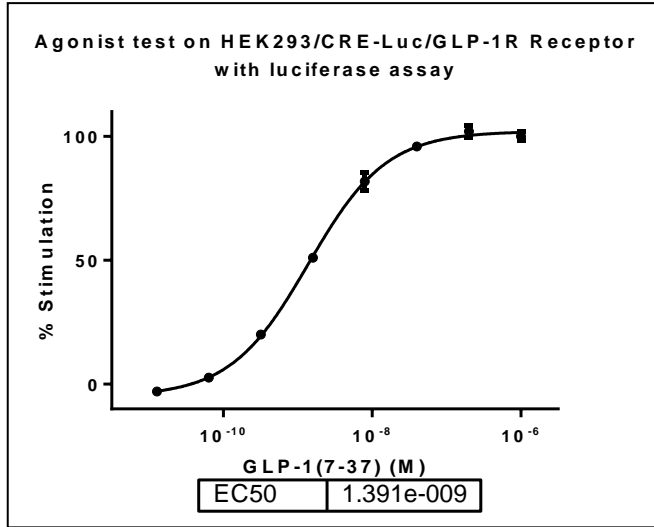
Lane62: HEK293/CRE-Luc/GLP-1R



§: GenScript employs a PCR-based method to test the mycoplasma. The test covers 11 of the most common strains of mycoplasma, (covering approximately 95% of *M.fermentans*, *M. hyorhinitis*, *M. arginini*, *M. orale*, *M.salivarium*, *M. hominis*, *M. pulmonis*, *M. arthritidis*, *M. neurolyticum*, *M. hyopneumoniae* and *M. capricolum*) and one species *Ureaplasma (U. urealyticum)*, with sufficient sensitivity and specificity.

Certificate of Analysis

QC Data



Prepared by

Qi Wang

Wang Qi B.S.

Scientist, Department of Biologics Development

Approved by

Michael Sun

Michael Sun, M.S.

Scientist, Department of Biologics Development