

Sample Name : α -Factor Mating Pheromone, yeast
 Cat No. : RP01002
 Lot No. : PE4931708

Pump A : 0.065% trifluoroacetic in 100% water (v/v)
 Pump B : 0.05% trifluoroacetic in 100% acetonitrile (v/v)
 Total Flow: 1 ml/min
 Wavelength: 220 nm

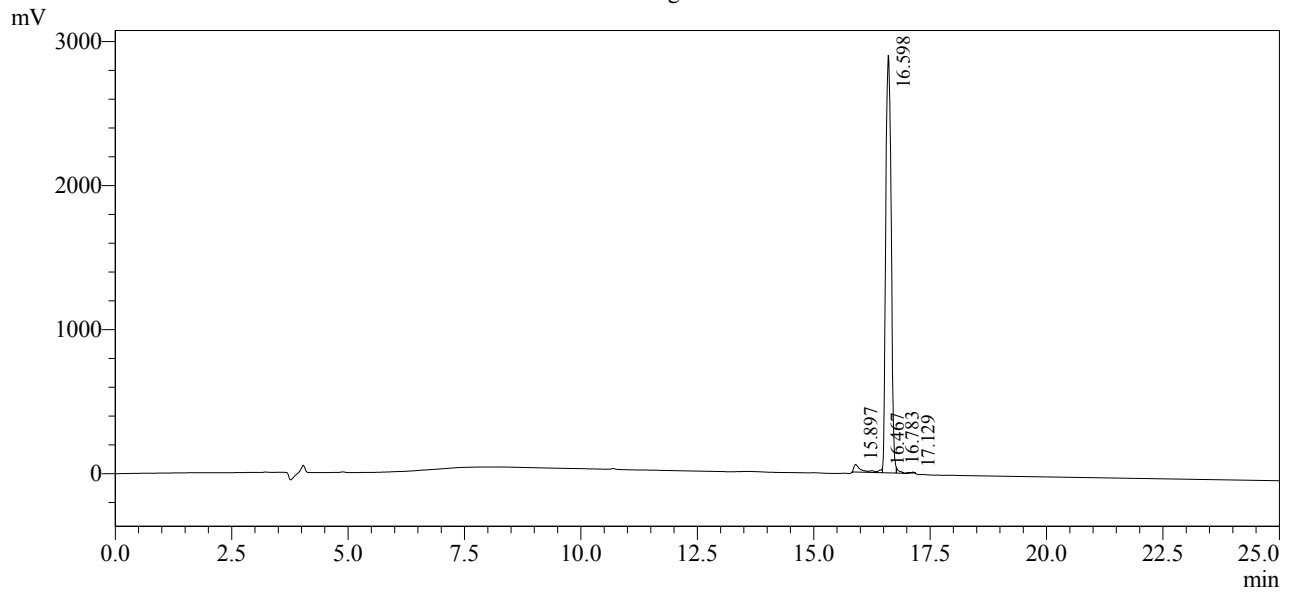
| Time | Unit | Command | Value | Comment |
|-------|------------|--------------|-------|---------|
| 0.01 | Pumps | Pump B Conc. | 5 | |
| 25.00 | Pumps | Pump B Conc. | 65 | |
| 25.01 | Pumps | Pump B Conc. | 95 | |
| 31.00 | Pumps | Pump B Conc. | 95 | |
| 31.01 | Pumps | Pump B Conc. | 5 | |
| 40.00 | Pumps | Pump B Conc. | 5 | |
| 40.01 | Controller | Stop | | |

<<Column Performance>>

<Detector A>

Column : AlltimaTM C18 4.6 x 250 mm

Chromatogram



1 Det.A Ch1 / 220nm

Peak Table

Detector A Ch1 220nm

| Peak# | Ret. Time | Area | Height | Area % |
|-------|-----------|----------|---------|---------|
| 1 | 15.897 | 561559 | 52405 | 2.306 |
| 2 | 16.467 | 118627 | 21897 | 0.487 |
| 3 | 16.598 | 23505290 | 2897988 | 96.508 |
| 4 | 16.783 | 125282 | 32578 | 0.514 |
| 5 | 17.129 | 45130 | 6201 | 0.185 |
| Total | | 24355888 | 3011069 | 100.000 |