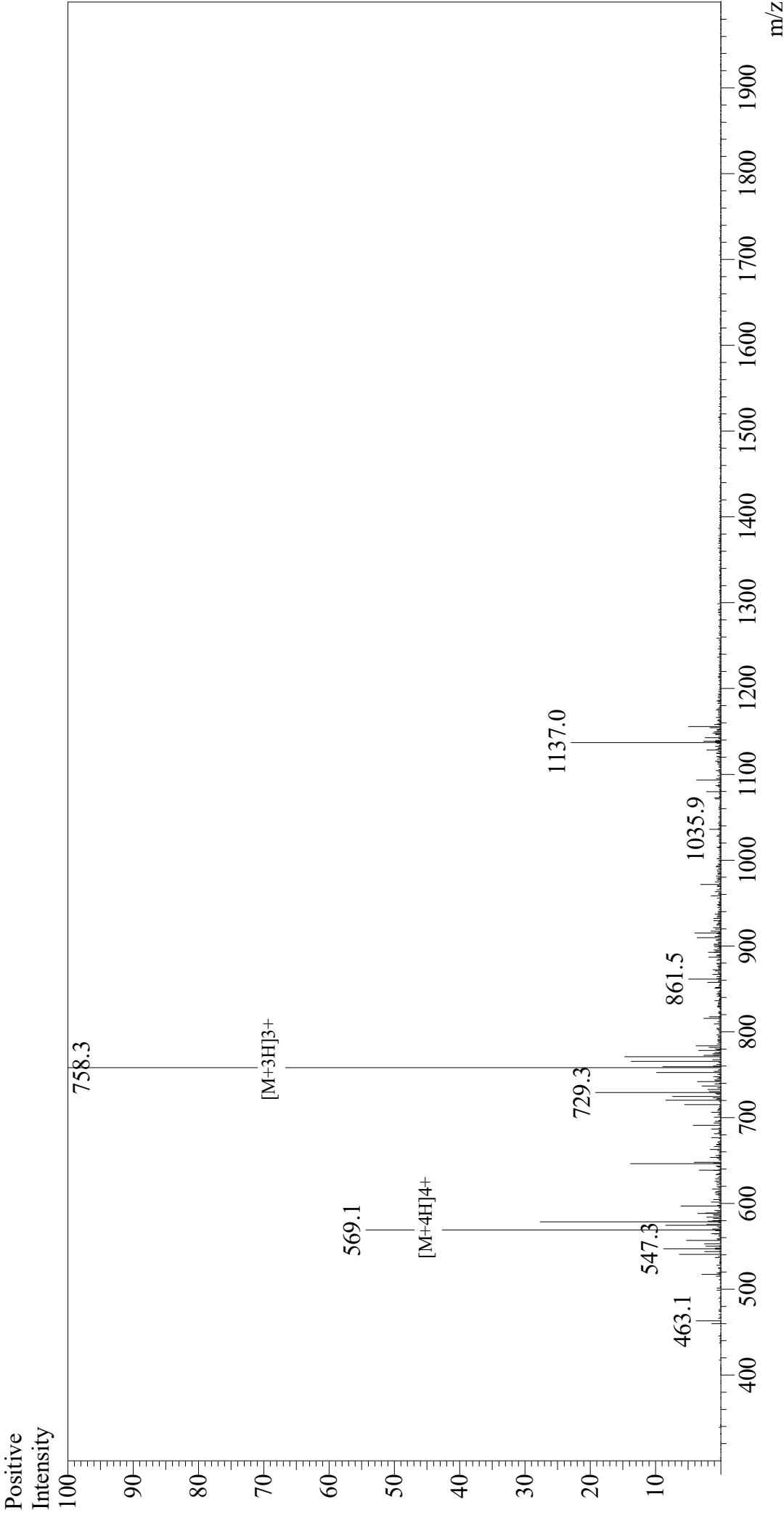


Mass Spectrum



Sample Information

Month-Day Processed : 02/06/21
Time Processed : 5:56:58 PM
Injection Volume : 0.5
Sample Name : Flagelin22
Cat. No. : RP19986
Lot. No. : E7980921B
Theoretical MW : 2272.50
Observed MW : 2271.9

Interface

Interface : ESI
Nebulizing Gas Flow : 1.5L/min
CDL Temp : 250
Block Temp : 200

Equipment

Equipment : GK11010007
Interface Bias : +4.5 kV
Drying Gas Flow : 5 L/min
T.Flow : 0.2 ml/min
B.conc : 50%H2O/50%MeOH