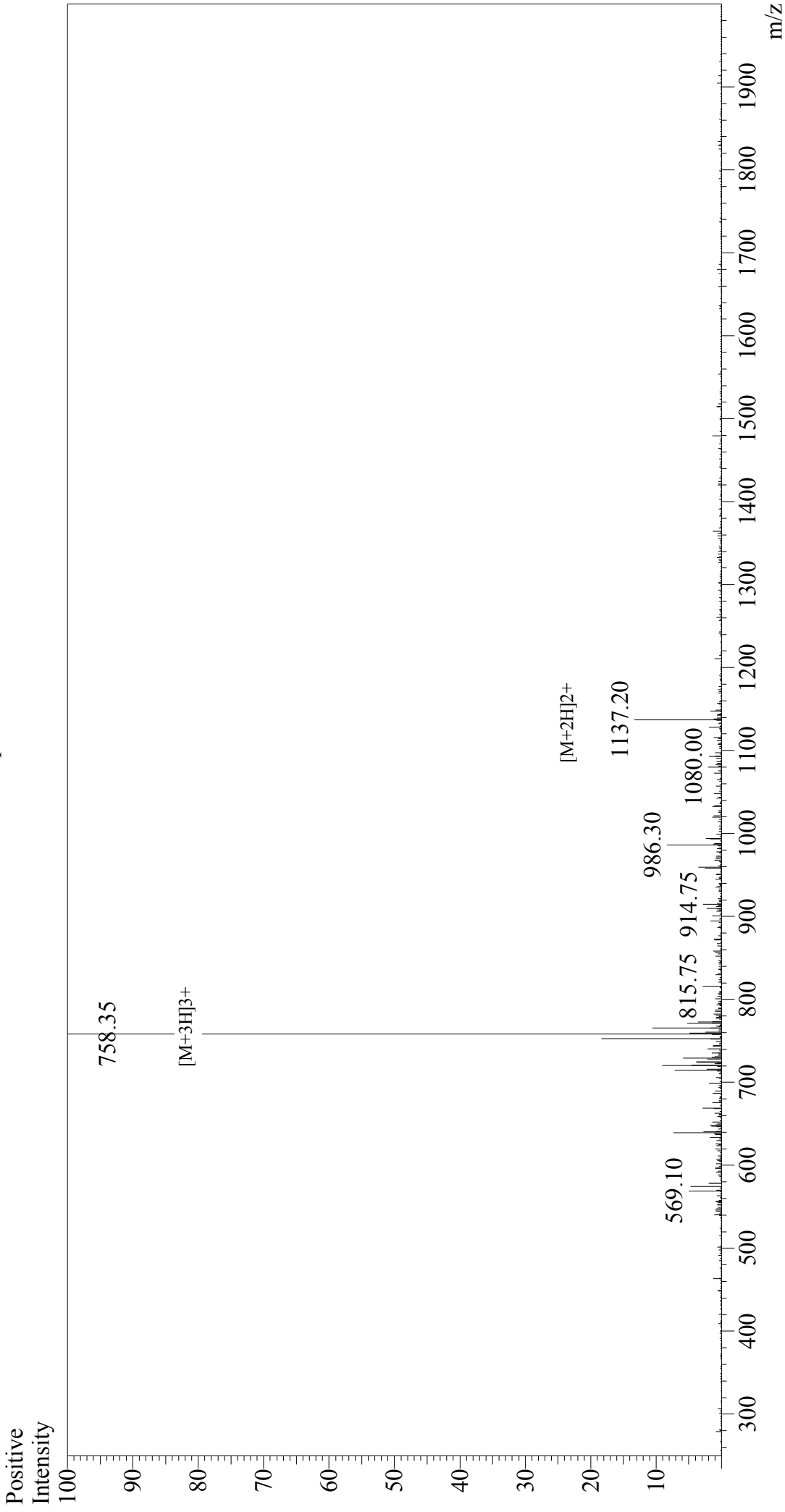


# Mass Spectrum



### Sample Information

Acquired by : Gary  
 Month-Day Processed : 09/20/17  
 Time Processed : 12:12:15  
 Injection Volume : 0.2  
 Sample Name : Flagelin22  
 Cat No. : RP19986  
 Lot No. : PE6341709  
 Theoretical MW : 2272.50  
 Observed MW : 2272.05

Interface : ESI  
 Nebulizing Gas Flow : 1.5L/min  
 CDL Temp : 250°C  
 Block Temp : 200°C

Interface Bias  
 Drying Gas Flow  
 T.Flow  
 B.conc

: +4.5 kV  
 : 5 L/min  
 : 0.2 ml/min  
 : 50% H<sub>2</sub>O/50% MeOH