

Sample Name : β -Amyloid (1-42), human
 Cat. No. : RP10017
 Lot. No. : PE5351610

Pump A : 0.065% trifluoroacetic in 100% water (v/v)
 Pump B : 0.05% trifluoroacetic in 100% acetonitrile (v/v)
 Total Flow: 1 ml/min
 Wavelength: 220 nm

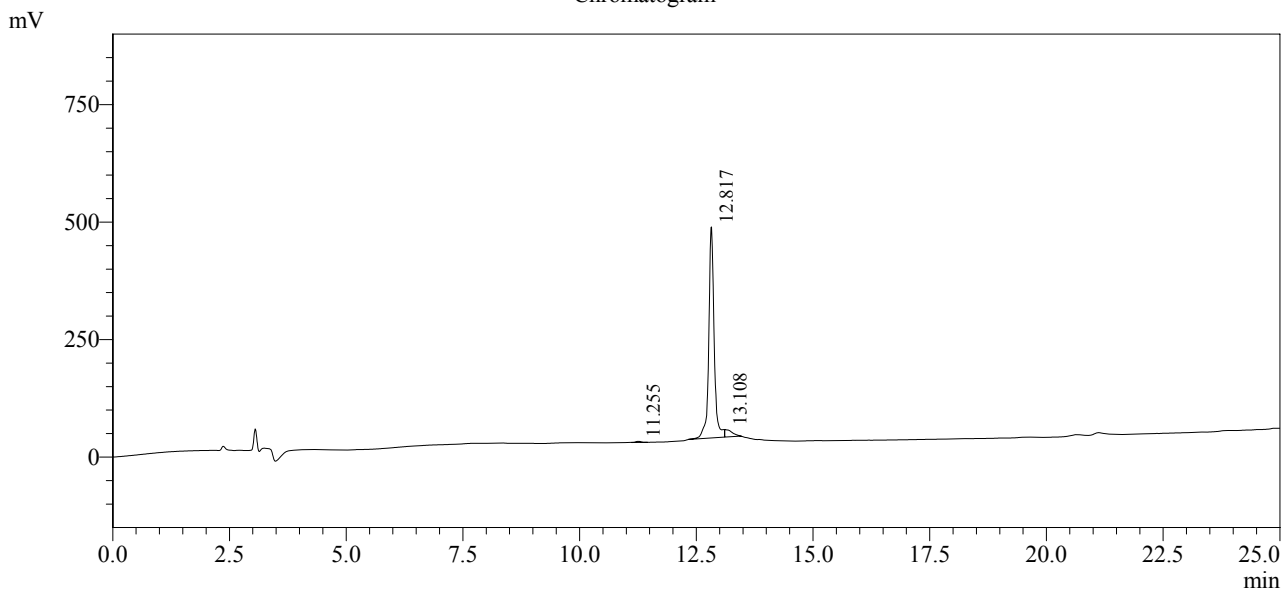
| Time | Unit | Command | Value | Comment |
|-------|------------|--------------|-------|---------|
| 0.01 | Pumps | Pump B Conc. | 10 | |
| 25.00 | Pumps | Pump B Conc. | 100 | |
| 25.01 | Pumps | Pump B Conc. | 95 | |
| 31.00 | Pumps | Pump B Conc. | 95 | |
| 31.01 | Pumps | Pump B Conc. | 95 | |
| 40.00 | Pumps | Pump B Conc. | 15 | |
| 95.00 | Controller | Stop | | |

<<Column Performance>>

<Detector A>

Column : Alltima™ C18 4.6 x 250 mm

Chromatogram



1 Det. A Ch1 / 220nm

Peak Table

Detector A Ch1 220nm

| Peak# | Ret. Time | Area | Height | Area % |
|-------|-----------|---------|--------|---------|
| 1 | 11.255 | 18620 | 2321 | 0.492 |
| 2 | 12.817 | 3597114 | 449194 | 95.121 |
| 3 | 13.108 | 165902 | 16122 | 4.387 |
| Total | | 3781635 | 467637 | 100.000 |